

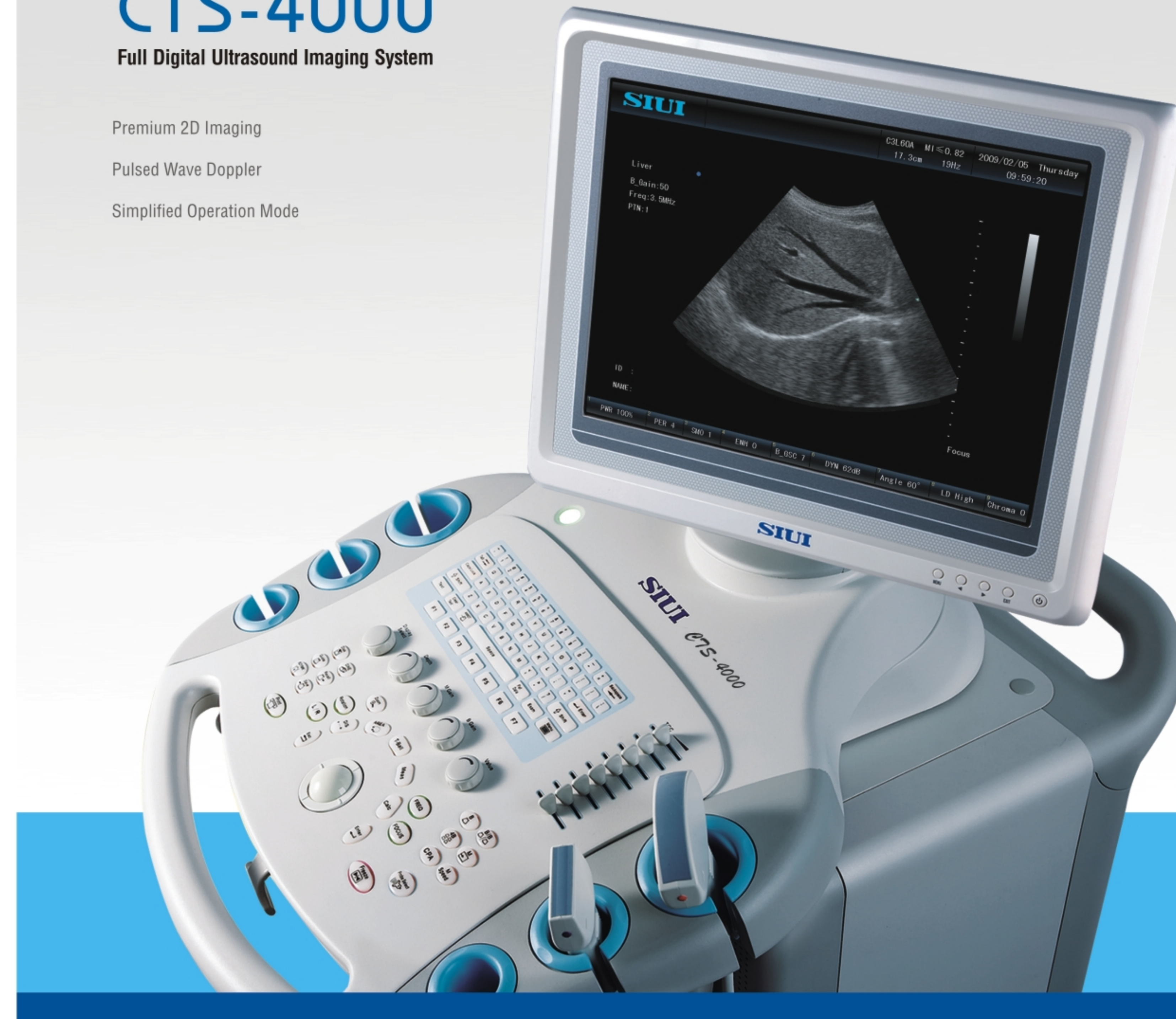
# CTS-4000

Full Digital Ultrasound Imaging System

Premium 2D Imaging

Pulsed Wave Doppler

Simplified Operation Mode



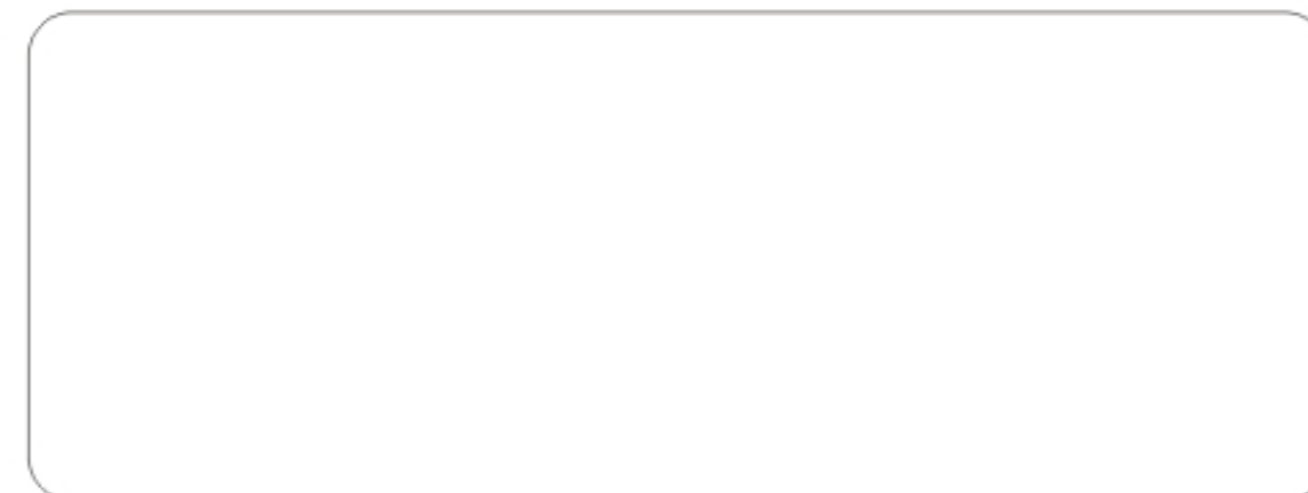
# SIUI

Shantou Institute of Ultrasonic Instruments Co., Ltd.

Add: #77, Jinsha Road, Shantou 515041, Guangdong, China

Tel: +86-754-88250150 Fax: +86-754-88251499

E-mail: [siui@siui.com](mailto:siui@siui.com) Website: <http://www.siui.com>



# SIUI

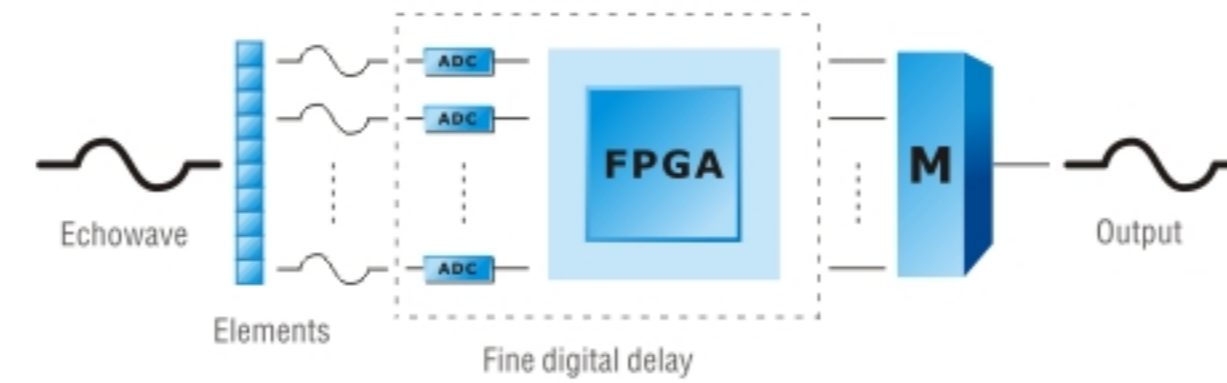
Specifications and appearance are subject to change without prior notice.  
DCY2.782.EN.CTS-4000.CY/5A01

## Outstanding 2D imaging

The CTS-4000 is in itself a high-end trolley ultrasound system, and it is featured with highly clear image quality and strong functions.

### High-Precision Digital Imaging Technology

- HiFi Digital Beam Forming (HDBF)
- Realtime Continuous Dynamic Focusing (RCDF)
- Realtime Dynamic Frequency Scanning (RDFS)
- Realtime Dynamic Aperture (RDA)
- Dynamic Realtime Apodization (DRA)
- High-Density Beamforming Scanning (HDBS)



Accurate beam forming and signal processing, digital image acquisition and processing ensure images with clear-cut edge and no distortion.

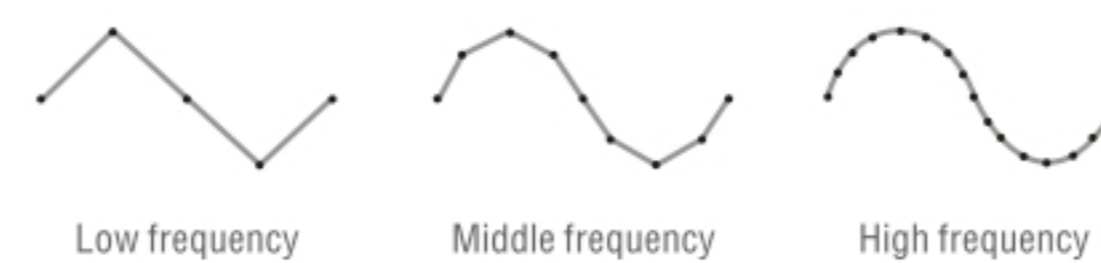
### Excellent Image Processing Technology

#### Tissue Characterization Imaging

Based on characteristics of different tissues, the optimal parameters are preset in the system for acquiring ideal images easily.

#### High Frequency Sampling

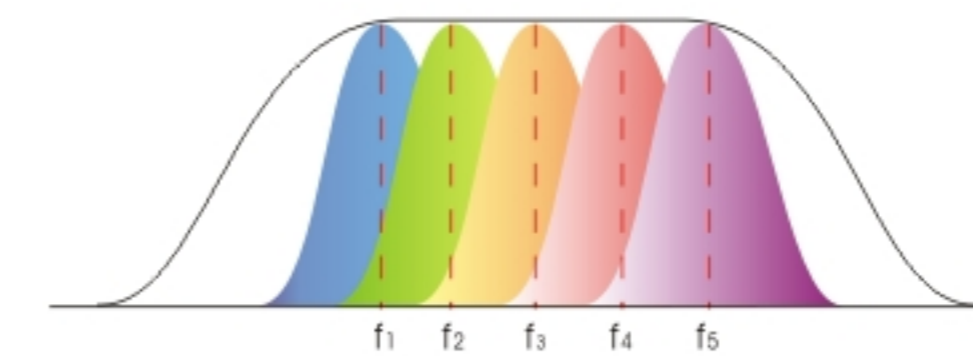
To deliver images with real representation of actual organs.



## Powerful Function

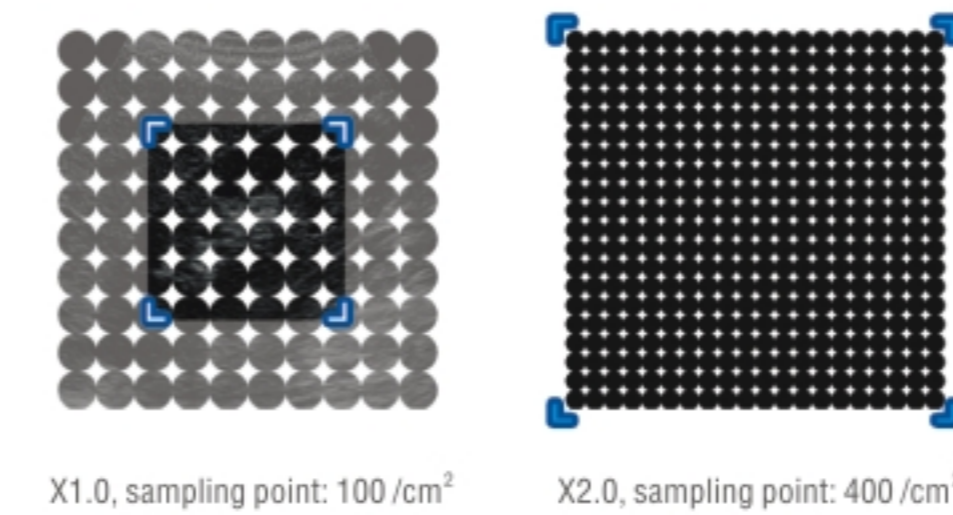
### Five-frequency Probe

Each probe has five frequencies for selection. Finer images can be obtained according to different diagnosis needs.



### Unique High-Definition Zoom Function

When scanning images, the user can double acquire data from the region of interest, making the image finer and tissue resolution higher.



### PIP (Picture-in-Picture) Function

The user can zoom in any region of interest, while maintaining the original diagnostic image for reference, to observe the zoom-in part clearly, thus diagnostic efficiency is improved.

### IP One-key Optimization

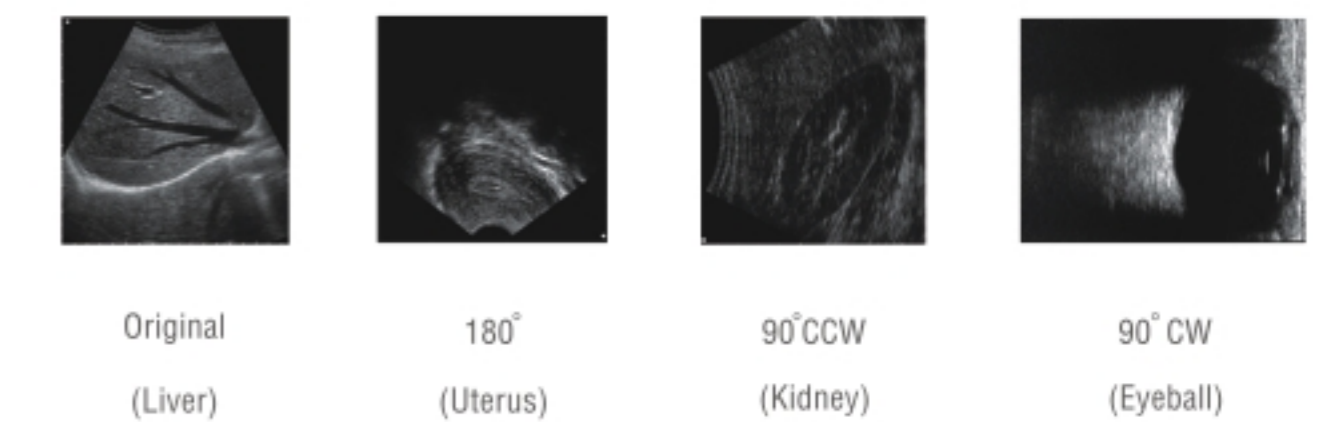
One key for eight-parameter adjustment, easy image optimization.

### Screen Saver Function

To protect the special ultrasound monitor and extend its service life.

### Convertible Image Orientation

Images can be inverted not only up/down/left/right, but 90° continuously. The doctors may observe images as they wish, clear at a glance in clinical exchange.



### Smart Tracing Function

When measuring area or circumference, if the trace is not good, press Backspace to return to the proper place and then continue tracing.



### Complete M-Mode Function

- Editable screen layout for B-mode and M-mode: Up/down or left/right display for selection.
- 2560-second super large capacity for M-mode cine.

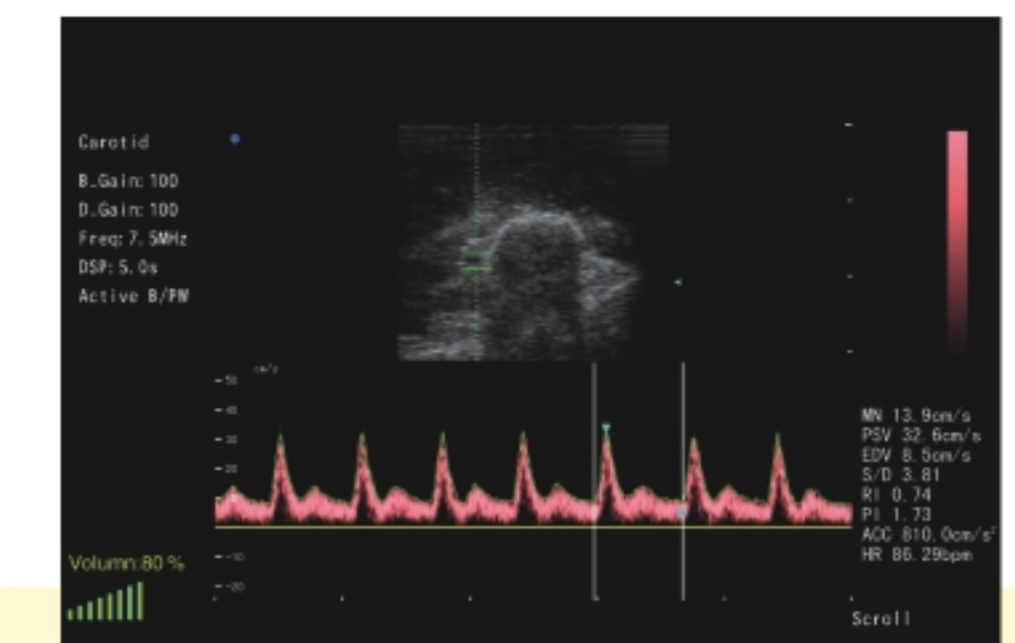
### Auto Freeze Function

To extend the service life of probes effectively.

### User-defined Function Key

The user can assign frequently used functions on certain keys. For example, assign the BPD measurement function on F1 key. Press F1, and then you can access the function, which brings easy and convenient

### Pulsed Wave Doppler (Option)



Measure artery flow in the palm with auto envelope, flow velocity, S/D ratio, RI, PI, acceleration, HR, etc.

